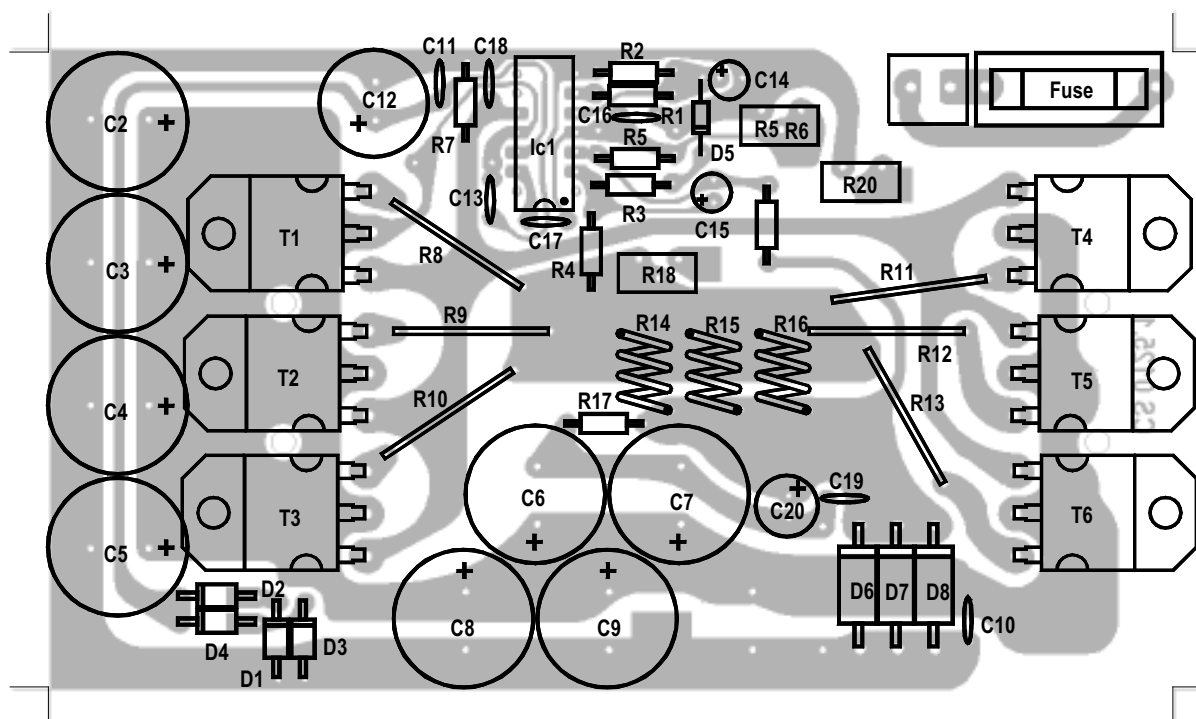
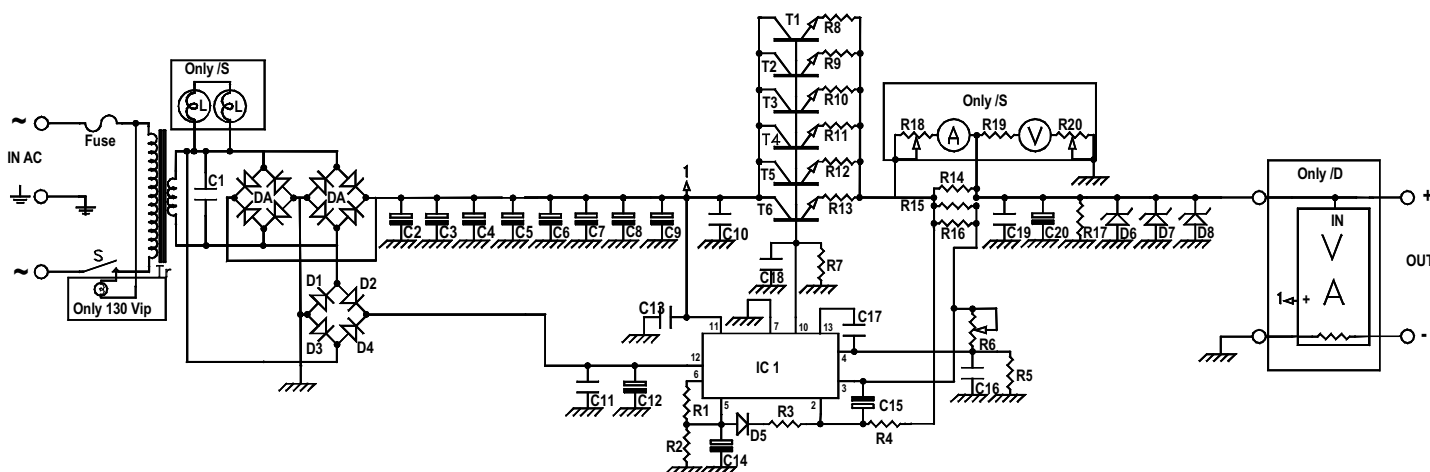




Mod. 130 S power supply

Schematic diagram

Version 3.00



List of components

C ₁ = 470 nF 63 V~	D ₈ = 1N 5353
C ₂ = 4700 µF 25 V	T ₁ = TIP 142
C ₃ = 4700 µF 25 V	T ₂ = TIP 142
C ₄ = 4700 µF 25 V	T ₃ = TIP 142
C ₅ = 4700 µF 25 V	T ₄ = TIP 142
C ₆ = 4700 µF 25 V	T ₅ = TIP 142
C ₇ = 4700 µF 25 V	T ₆ = TIP 142
C ₈ = 4700 µF 25 V	TR = Transformer 220 - 18 V 30 A
C ₉ = 4700 µF 25 V	FUSE = Fuse 4A
C ₁₀ = 100 nF 50 V	IC ₁ = LM 723
C ₁₁ = 100 nF 50 V	L = not present
C ₁₂ = 470 µF 25 V	S = Switch ON OFF
C ₁₃ = 100 nF 50 V	
C ₁₄ = 2,2 µF 25 V	
C ₁₅ = 2,2 µF 25 V	
C ₁₆ = 150 pF 50 V	
C ₁₇ = 470 pF 50 V	
C ₁₈ = 100 nF 50 V	
C ₁₉ = 100 nF 50 V	
C ₂₀ = 22 µF 25 V	
R ₁ = 2,2 KΩ ¼ W	
R ₂ = 4,7 KΩ ¼ W	
R ₃ = 470 Ω ¼ W	
R ₄ = 470 Ω ¼ W	
R ₅ = Trimmer 4,7 KΩ	
R ₆ = Potentiometer 4,7 KΩ	
R ₇ = 2,2 KΩ ¼ W	
R ₈ = Resistive wire φ 0,8 mm x 20 mm	
R ₉ = Resistive wire φ 0,8 mm x 20 mm	
R ₁₀ = Resistive wire φ 0,8 mm x 20 mm	
R ₁₁ = Resistive wire φ 0,8 mm x 20 mm	
R ₁₂ = Resistive wire φ 0,8 mm x 20 mm	
R ₁₃ = Resistive wire φ 0,8 mm x 20 mm	
R ₁₄ = Resistive wire coil φ 1 mm 4 turn φ 6 mm	
R ₁₅ = Resistive wire coil φ 1 mm 4 turn φ 6 mm	
R ₁₆ = Resistive wire coil φ 1 mm 4 turn φ 6 mm	
R ₁₇ = 1,0 KΩ ½ W	
R ₁₈ = Trimmer 22 KΩ	
R ₁₉ = 47 KΩ ¼ W	
R ₂₀ = Trimmer 220 KΩ	
DA = 2 x Diode bridge 25 A	
D ₁ = 1N 4004	
D ₂ = 1N 4004	
D ₃ = 1N 4004	
D ₄ = 1N 4004	
D ₅ = 1N 4148	
D ₆ = 1N 5353	
D ₇ = 1N 5353	