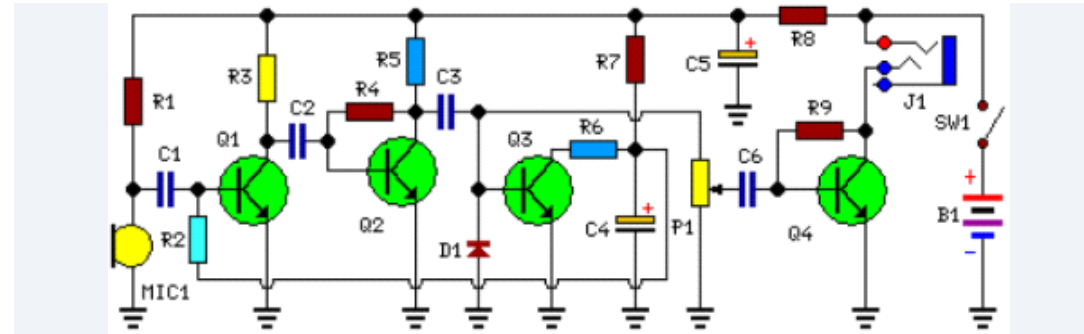


Amplified Ear

Description

This circuit, connected to 32 Ohm impedance mini-earphones, can detect very remote sounds. Useful for theatre, cinema and lecture goers: every word will be clearly heard. You can also listen to your television set at a very low volume, avoiding to bother relatives and neighbors. Even if you have a faultless hearing, you may discover unexpected sounds using this device: a remote bird twittering will seem very close to you.

Circuit Diagram:



Parts:

P1 = 22K
R1 = 10K
R2 = 1M
R3 = 4K7
R4 = 100K
R5 = 3K9
R6 = 1K5
R7 = 100K
R8 = 100R
R9 = 10K
C1 = 100nF 63V
C2 = 100nF 63V
C3 = 1μF 63V
C4 = 10μF 25V
C5 = 470μF 25V
C6 = 1μF 63V
D1 = 1N4148
Q1 = BC547
Q2 = BC547
Q3 = BC547
Q4 = BC337
J1 = Stereo 3mm. Jack socket
B1 = 1.5V Battery (AA or AAA cell etc.)
SW1 = SPST Switch (Ganged with P1)